

TOMAHAWK M50 SA SHALLOW MOUNT BOLLARDS



FEATURES

- Certified to stop a 15,000 lb vehicle at 50 mph (ASTM F2656-M50-P1)
- Industry-leading, high-security, single stand-alone shallow-mount bollard
- Department of Defense (DoD) approved and listed on the Anti-Ram Vehicle Barrier List
- Double-wall steel construction with an \varnothing 8-5/8" Schedule 80 inner pipe and 10-3/4" Schedule 120 outer pipe
- 14" shallow foundation avoids interference with underground utilities
- Prefabricated bollard unit allows for field adjustments during installation
- Offered with a variety of decorative cover options

PRODUCT DETAILS

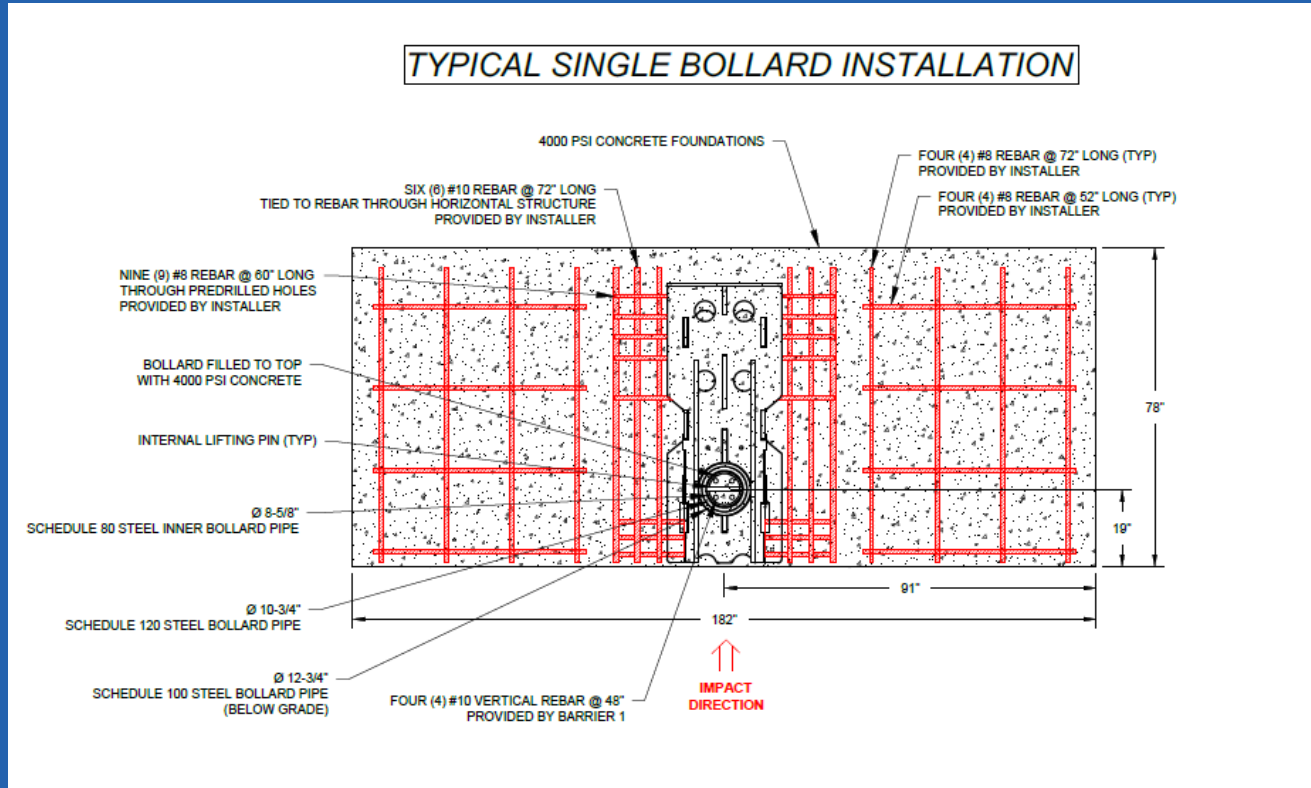
- Model #: SMB-1200-SA
- Diameter: 10 3/4" OD Steel Pipe
- Weight: 1,965 lbs. each (with rebar)
- Foundation Depth: 14"
- Bollard Cover Diameter: 12"



Scan for more information.



TOMAHAWK M50 SA SHALLOW MOUNT BOLLARDS



WHY BARRIER 1?

Core Competencies:

Barrier1 designs and manufactures crash-rated vehicle barriers that protect people, property, and critical infrastructure. Our solutions are engineered to stop vehicle-based threats while maintaining site functionality. Trusted across airports, military bases, stadiums, government buildings, data centers, and power plants, Barrier1 delivers proven perimeter protection.

What We Offer:

- Certified anti-ram barriers (ASTM F2656 & F3016)
- Shallow- and deep-mount options
- Temporary, removable, and permanent solutions
- Custom engineering and manufacturing
- Decorative covers and finishes for visual integration



MADE IN THE USA
Summerfield, NC