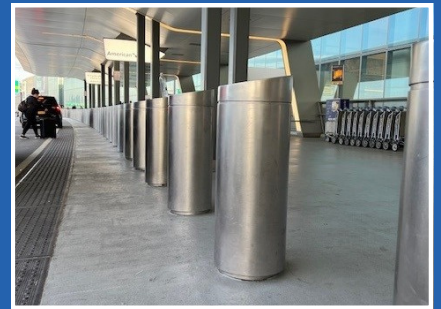




## HORNET M30 SHALLOW MOUNT BOLLARDS

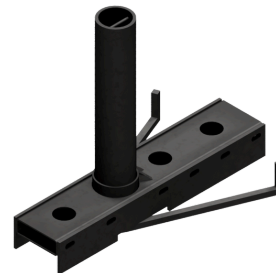


### FEATURES

- Certified to stop a 15,000 lb vehicle at 30 mph (ASTM F2656-M30-P1)
- Ideal for sites requiring high-security bollards with limited foundation depth
- 12" shallow foundation avoids interference with underground utilities
- Department of Defense (DoD) approved and listed on the Anti-Ram Vehicle Barrier List
- Traditional high-security shallow-mount design with 3-bollard array
- Offered with a variety of decorative cover options to match your site's aesthetic
- Built to perform in high-traffic, high-security environments

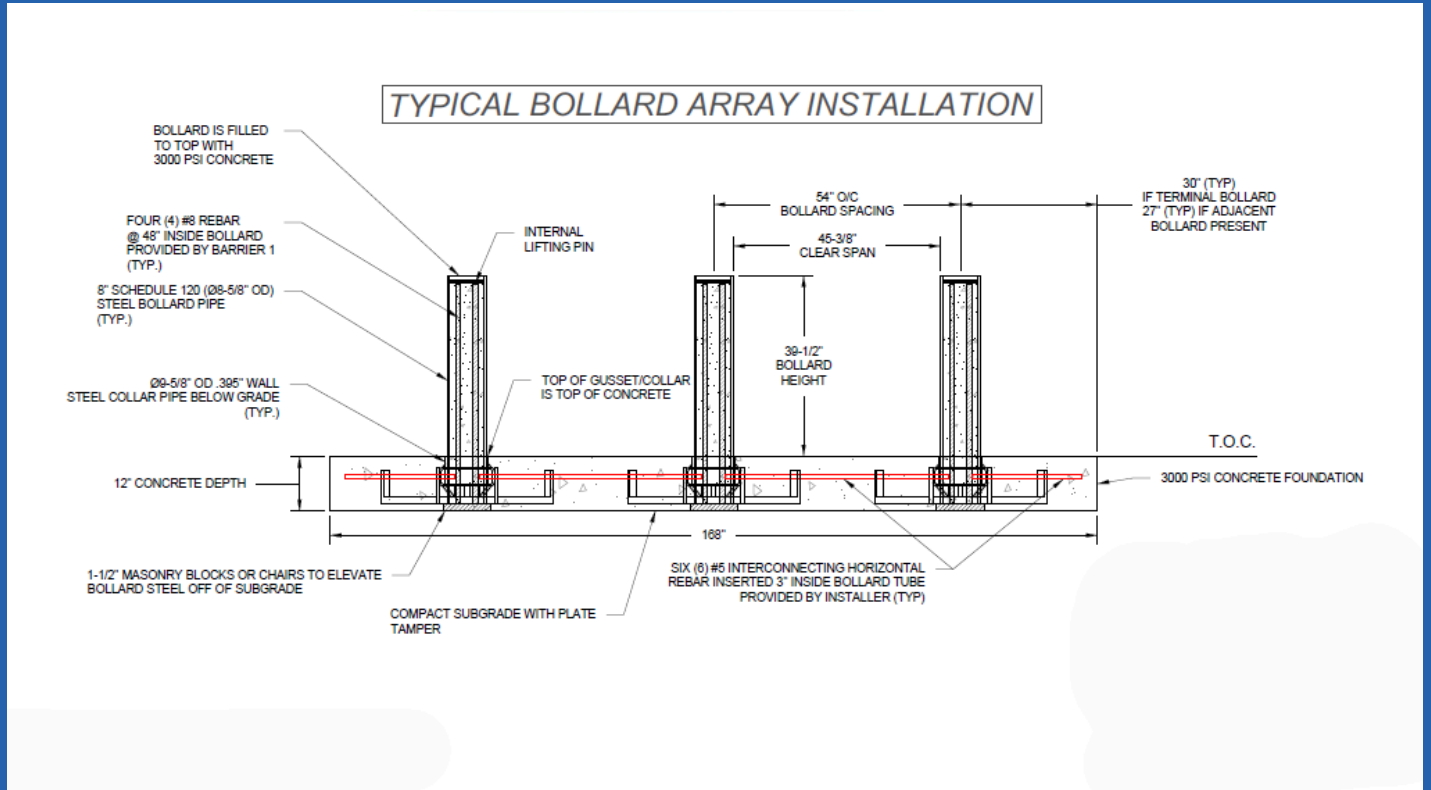
### PRODUCT DETAILS

- Model #: SMB-400
- Diameter: 8 5/8" OD Steel Pipe
- Weight: 740 lbs. each (with rebar)
- Foundation Depth: 12"
- Bollard Cover Diameter: 10"



Scan for more information.

## HORNET M30 SHALLOW MOUNT BOLLARDS



## WHY BARRIER 1?

### Core Competencies:

Barrier1 designs and manufactures crash-rated vehicle barriers that protect people, property, and critical infrastructure. Our solutions are engineered to stop vehicle-based threats while maintaining site functionality. Trusted across airports, military bases, stadiums, government buildings, data centers, and power plants, Barrier1 delivers proven perimeter protection.

### What We Offer:

- Certified anti-ram barriers (ASTM F2656 & F3016)
- Shallow- and deep-mount options
- Temporary, removable, and permanent solutions
- Custom engineering and manufacturing
- Decorative covers and finishes for visual integration



**MADE IN THE USA**  
Summerfield, NC