

CRASH TESTED TO ASTM F2656-07 - M40/P1 RATED - STOPS 15,000 LB. VEHICLE AT 40 MPH IMPACT

Technical drawing of a bollard assembly, showing a cross-section and a plan view.

Cross-section labels:

- BOLLARD FILLED TO TOP WITH 4000 PSI CONCRETE
- SEVEN (7) #6 REBAR @ 36" INSIDE BOLLARD TUBE AND PIPE PROVIDED BY BARRIER1
- INTERNAL LIFTING PIN
- 12" X 12" X 1/2" SQUARE BOLLARD TUBE
- (Ø10 3/4" OD) INNER BOLLARD PIPE
- 10" SCHEDULE 60 STEEL PIPE
- 4000 PSI CONCRETE FOUNDATION
- BOLLARD FRAME VISIBLE ABOVE GRADE
- TOP OF BAR/PLATE IS TOP OF CONCRETE

Plan view labels:

- 60" O/C BOLLARD SPACING
- 48" CLEAR SPAN
- 39" (TYP) TO EDGE FOR TERMINAL BOLLARDS
- 35" BOLLARD HEIGHT
- 6"
- 4" T.O.C.
- FIVE (5) 26-1/2" X 6" X 3/4" STEEL CONNECTOR PLATES (TYP)
- 17'
- COMPACT SUBGRADE WITH PLATE TAMPER



3300 BATTLEGROUND AVE, STE 320
GREENSBORO, NC 27410
(336) 617-8478 www.barrier1.com
sales@barrier1.com

THE DRAWINGS AND INFORMATION CONTAINED HEREIN ARE PROPRIETARY AND CONFIDENTIAL, AND ARE AUTHORIZED ONLY FOR USE FOR WORK ASSOCIATED WITH BARRIER1 SYSTEMS, LLC ALL RIGHTS RESERVED.

SSP-800
WEBSITE DRAWING

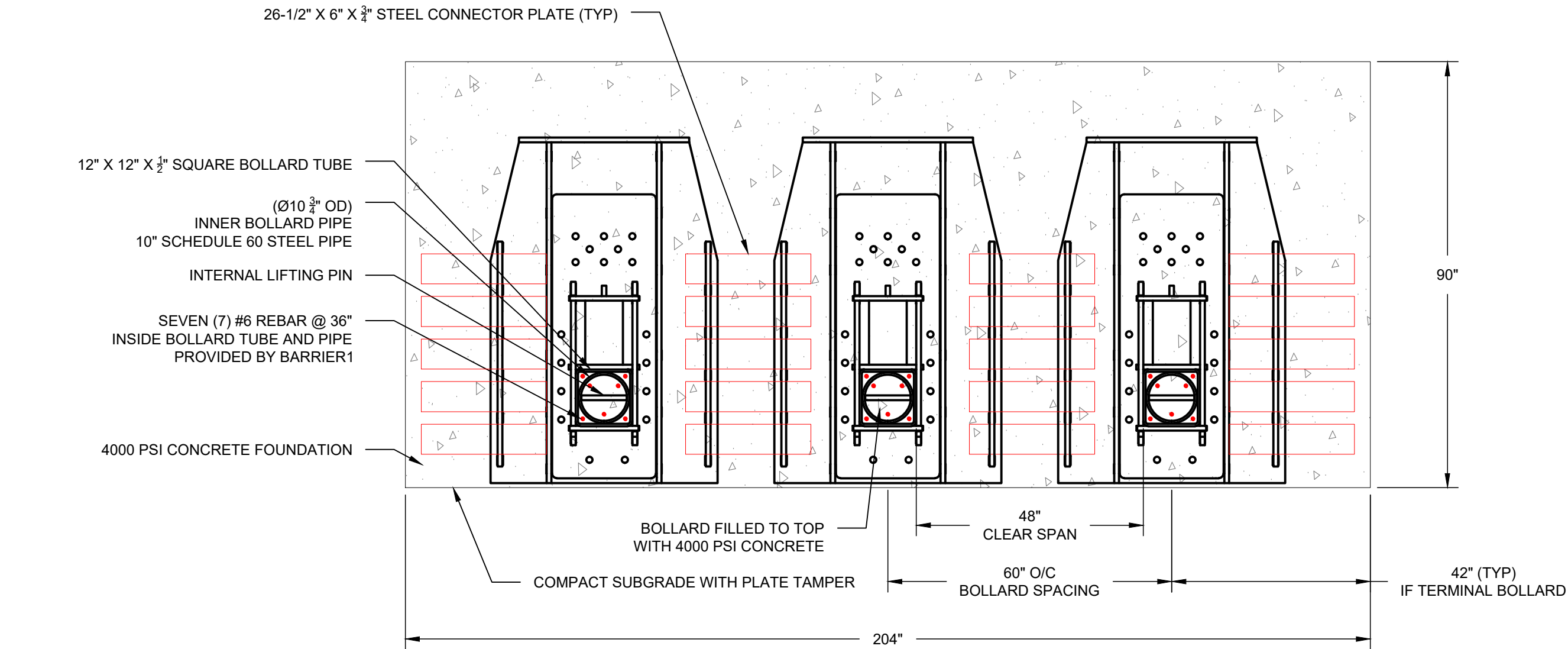
SCALE: N.T.S.

B1 TALON M40

SUPER SHALLOW POST - MODEL SSP-800

CRASH TESTED TO ASTM F2656-07 - M40/P1 RATED - STOPS 15,000 LB. VEHICLE AT 40 MPH IMPACT

TYPICAL BOLLARD ARRAY INSTALLATION



NOTE:
MODIFIED SPACING FOR SITE SPECIFIC CONDITIONS AVAILABLE.



BARRIER1 SYSTEMS, LLC

3300 BATTLEGROUND AVE, STE 320
GREENSBORO, NC 27410
(336) 617-8478 www.barrier1.com
sales@barrier1.com

PATENT PROTECTED

THE DRAWINGS AND INFORMATION CONTAINED HEREIN ARE
PROPRIETARY AND CONFIDENTIAL, AND ARE AUTHORIZED ONLY
FOR USE FOR WORK ASSOCIATED WITH BARRIER1 SYSTEMS, LLC
ALL RIGHTS RESERVED.

PLAN VIEW

SSP-800
WEBSITE DRAWING

SHEET: 2 OF 4

20250212-10-S

SCALE: N.T.S.

B1 TALON M40

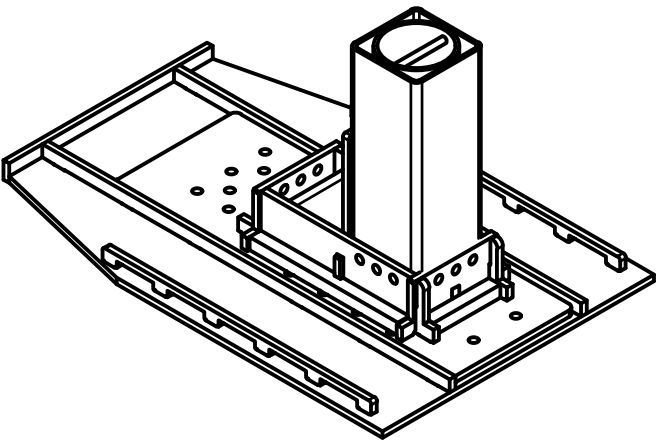
SUPER SHALLOW POST - MODEL SSP-800

CRASH TESTED TO ASTM F2656-07 - M40/P1 RATED - STOPS 15,000 LB. VEHICLE AT 40 MPH IMPACT

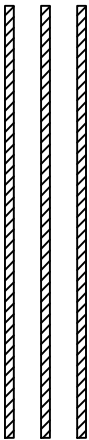
MATERIALS PROVIDED

MATERIALS PROVIDED BY BARRIER1 SYSTEMS

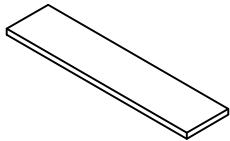
STANDARD FINISH:
BLACK PAINT



(QTY: 1) EACH:
PREFABRICATED BOLLARD
WITH BASE STRUCTURE
(PRE-ASSEMBLED)



(QTY: 7) EACH:
PRECUT #6 REBAR @ 36" LONG
PLACED INSIDE BOLLARD TUBE (4) AND INNER
BOLLARD PIPE (3)



(QTY: 7) EACH:
CONNECTOR PLATE

MATERIALS PROVIDED BY INSTALLATION CONTRACTOR:

- 1. ABOUT 1.0 CUBIC YARDS OF CONCRETE PER BOLLARD
- 2. SIX (6) #5 HORIZONTAL REBAR PER BOLLARD TO CONNECT ADJACENT BOLLARDS
- 3. MASONRY BRICKS OR CHAIRS TO ELEVATE BOLLARD STEEL OFF SUBGRADE



BARRIER1 SYSTEMS, LLC

3300 BATTLEGROUND AVE, STE 320
GREENSBORO, NC 27410
(336) 617-8478 www.barrier1.com
sales@barrier1.com

PATENT PROTECTED

THE DRAWINGS AND INFORMATION CONTAINED HEREIN ARE
PROPRIETARY AND CONFIDENTIAL, AND ARE AUTHORIZED ONLY
FOR USE FOR WORK ASSOCIATED WITH BARRIER1 SYSTEMS, LLC
ALL RIGHTS RESERVED.

MATERIALS
PROVIDED

SSP-800
WEBSITE DRAWING

SHEET: 3 OF 4

20250212-10-S

SCALE: N.T.S.

B1 TALON M40

SUPER SHALLOW POST - MODEL SSP-800

CRASH TESTED TO ASTM F2656-07 - M40/P1 RATED - STOPS 15,000 LB. VEHICLE AT 40 MPH IMPACT

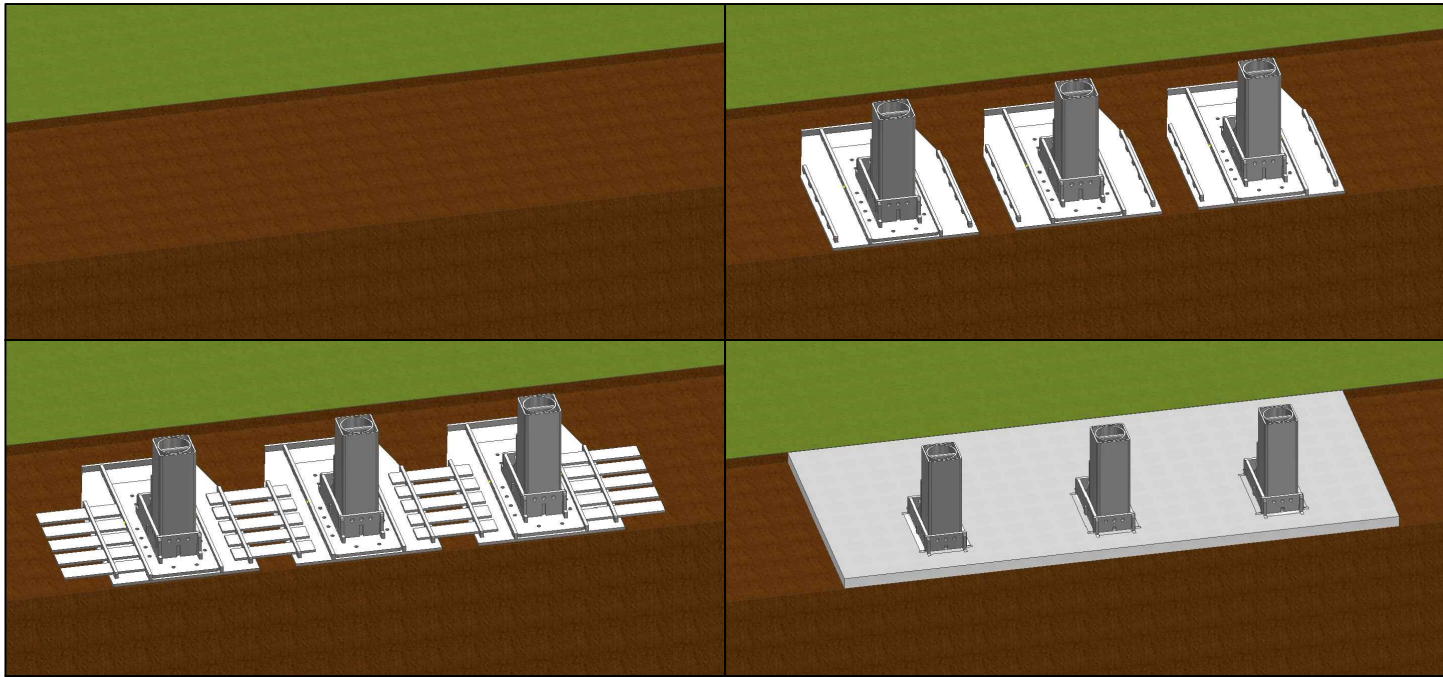
INSTALLATION STEPS

1 EXCAVATE THEN TAMP SUBGRADE WITH PLATE TAMPER.

2 PLACE PREFABRICATED BOLLARDS INTO EXCAVATION.

3 INSERT CONNECTION PLATES INSIDE PREFABRICATED SLOTS TO CONNECT BOLLARDS.

4 FILL BOLLARD TUBE AND FOUNDATION WITH CONCRETE.



BARRIER1 SYSTEMS, LLC

3300 BATTLEGROUND AVE, STE 320
GREENSBORO, NC 27410
(336) 617-8478 www.barrier1.com
sales@barrier1.com

PATENT PROTECTED

THE DRAWINGS AND INFORMATION CONTAINED HEREIN ARE
PROPRIETARY AND CONFIDENTIAL, AND ARE AUTHORIZED ONLY
FOR USE FOR WORK ASSOCIATED WITH BARRIER1 SYSTEMS, LLC
ALL RIGHTS RESERVED.

INSTALLATION STEPS

SSP-800
WEBSITE DRAWING

SHEET: 4 OF 4

20250212-10-S

SCALE: N.T.S.