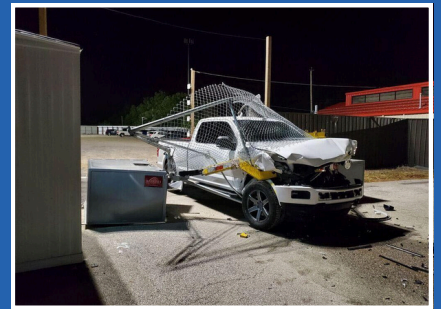


AVENGER M50 MANUAL SURFACE SET SWING ARM



FEATURES

- Certified to stop a 15,000 lb vehicle at 50 mph (ASTM F2656-M50-P3)
- Surface-set design avoids underground utilities and allows for fast installation
- Barrier arm swings horizontally and locks manually in the closed position
- Provides highly visible deterrent with safety yellow finish, reflective striping, and signage
- Bi-directional stopping capability (stops inbound and outbound threats)
- Easily relocated using a forklift without disassembly
- Hook side and pivot side are reversible for flexible site layout

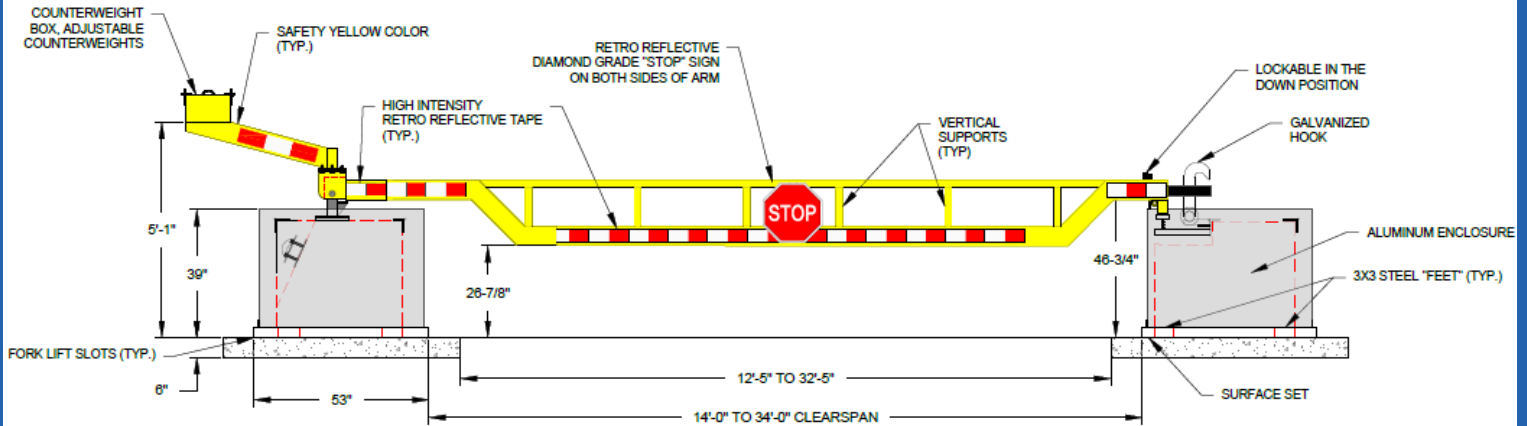
PRODUCT DETAILS

- Model #: DACB-PAM-1200-S
- Spans Available: 14'-34'
- Requires less than 40 lbs of force to operate



Scan for more
information.

AVENGER M50 MANUAL SURFACE SET SWING ARM



KEY CAPABILITIES:

1. BARRIER IS DELIVERED PREFABRICATED AND PRE ASSEMBLED, READY TO OFF-LOAD AND SURFACE SET.
2. BARRIER ARM SWINGS HORIZONTALLY (SEE SHEET 2 OF 2)
3. MANUAL LOCKING IN THE CLOSED POSITION.
4. BARRIER ARM IS HIGHLY VISIBLE WITH REFLECTIVE TAPE.
5. MOBILE BARRIER CAN BE EASILY RELOCATED USING A FORKLIFT WITHOUT REQUIRING DISASSEMBLY.
6. BARRIER PROVIDES BI-DIRECTIONAL STOPPING CAPABILITY (STOPS INBOUND AND OUTBOUND VEHICLE IMPACTS).
7. STAINLESS STEEL, HOT DIPPED GALVANIZED STEEL, AND ALUMINUM MATERIALS USED.
8. HOOK SIDE AND PIVOT SIDE OF BARRIER CAN BE REVERSED.
9. MODULAR COMPONENTS THAT CAN BE DISCONNECTED AND REPLACED, IF BARRIER IS IMPACTED.

WHY BARRIER 1?

Core Competencies:

Barrier1 designs and manufactures crash-rated vehicle barriers that protect people, property, and critical infrastructure. Our solutions are engineered to stop vehicle-based threats while maintaining site functionality. Trusted across airports, military bases, stadiums, government buildings, data centers, and power plants, Barrier1 delivers proven perimeter protection.

What We Offer:

- Certified anti-ram barriers (ASTM F2656 & F3016)
- Shallow- and deep-mount options
- Temporary, removable, and permanent solutions
- Custom engineering and manufacturing
- Decorative covers and finishes for visual integration



MADE IN THE USA
Summerfield, NC