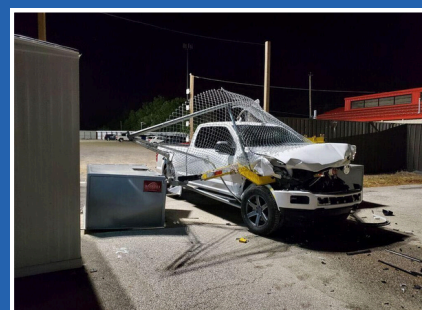




## AVENGER M50 MANUAL SURFACE SET DROP/SWING ARM



### FEATURES

- Certified to stop a 15,000 lb vehicle at 50 mph (ASTM F2656-M50-P3)
- Surface-set design allows for quick installation and avoids interference with underground utilities
- Delivered prefabricated and pre-assembled—ready to off-load and surface set with no excavation required
- Barrier arm is manually raised vertically or rotated horizontally in either direction
- Requires less than 40 lbs of force to operate
- Lockable in the closed position for added security
- Easily relocated with a forklift without disassembly
- Provides bi-directional stopping capability (inbound and outbound threats)

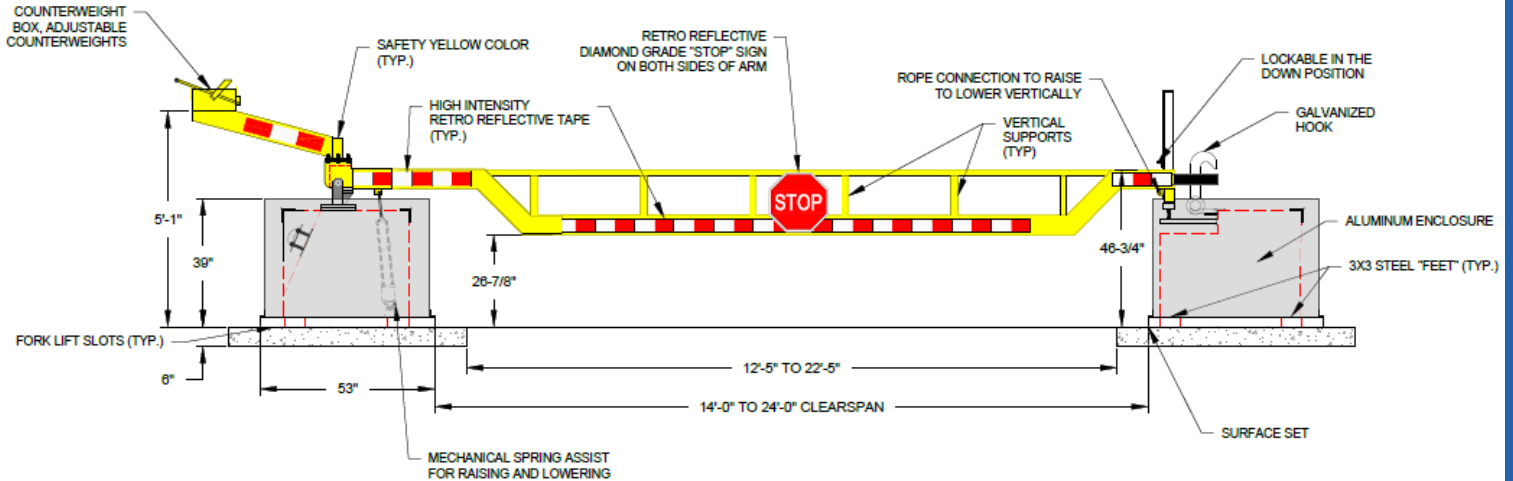
### PRODUCT DETAILS

- Model #: DACB-PAM-1200-DS
- Spans Available: 14'-24'
- Available in electric or manual versions



Scan for more information.

## AVENGER M50 MANUAL SURFACE SET DROP/SWING ARM



### KEY CAPABILITIES:

1. BARRIER IS DELIVERED PREFABRICATED AND PRE ASSEMBLED, READY TO OFF-LOAD AND SURFACE SET.
2. BARRIER ARM IS MANUALLY RAISED VERTICALLY OR ROTATED HORIZONTALLY IN EITHER DIRECTION (SEE NOTES ON SHEET 2 AND 3).
3. MANUAL LOCKING IN THE CLOSED POSITION.
4. BARRIER ARM IS HIGHLY VISIBLE WITH REFLECTIVE TAPE.
5. MOBILE BARRIER CAN BE EASILY RELOCATED USING A FORKLIFT WITHOUT REQUIRING DISASSEMBLY.
6. BARRIER PROVIDES BI-DIRECTIONAL STOPPING CAPABILITY (STOPS INBOUND AND OUTBOUND VEHICLE IMPACTS).
7. STAINLESS STEEL, HOT DIPPED GALVANIZED STEEL, AND ALUMINUM MATERIALS USED.
8. HOOK SIDE AND PIVOT SIDE OF BARRIER CAN BE REVERSED.
9. MODULAR COMPONENTS THAT CAN BE DISCONNECTED AND REPLACED, IF BARRIER IS IMPACTED.

## WHY BARRIER 1?

### Core Competencies:

Barrier1 designs and manufactures crash-rated vehicle barriers that protect people, property, and critical infrastructure. Our solutions are engineered to stop vehicle-based threats while maintaining site functionality. Trusted across airports, military bases, stadiums, government buildings, data centers, and power plants, Barrier1 delivers proven perimeter protection.

### What We Offer:

- Certified anti-ram barriers (ASTM F2656 & F3016)
- Shallow- and deep-mount options
- Temporary, removable, and permanent solutions
- Custom engineering and manufacturing
- Decorative covers and finishes for visual integration



**MADE IN THE USA**  
Summerfield, NC