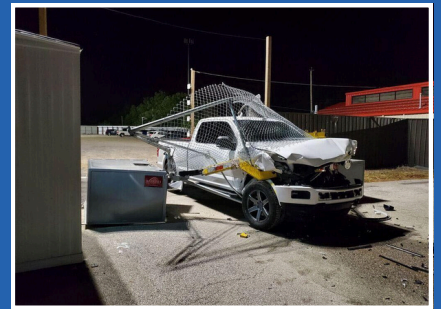




AVENGER M50 ELECTRIC SURFACE SET DROP ARM



FEATURES

- Certified to stop a 15,000 lb vehicle at 50 mph (ASTM F2656-M50-P3)
- Surface-set design allows for quick installation and avoids interference with underground utilities
- Ideal for nuclear facilities, oil & gas sites, chemical plants, and other critical infrastructure where excavation is limited
- Includes PLC-controlled logic with optional trigger loops and timers for traffic control
- Provides a highly visible deterrent; arm is painted safety yellow with retro-reflective striping and signage
- Bi-directional stopping capability (stops inbound and outbound threats)
- Easily relocated with a forklift without disassembly

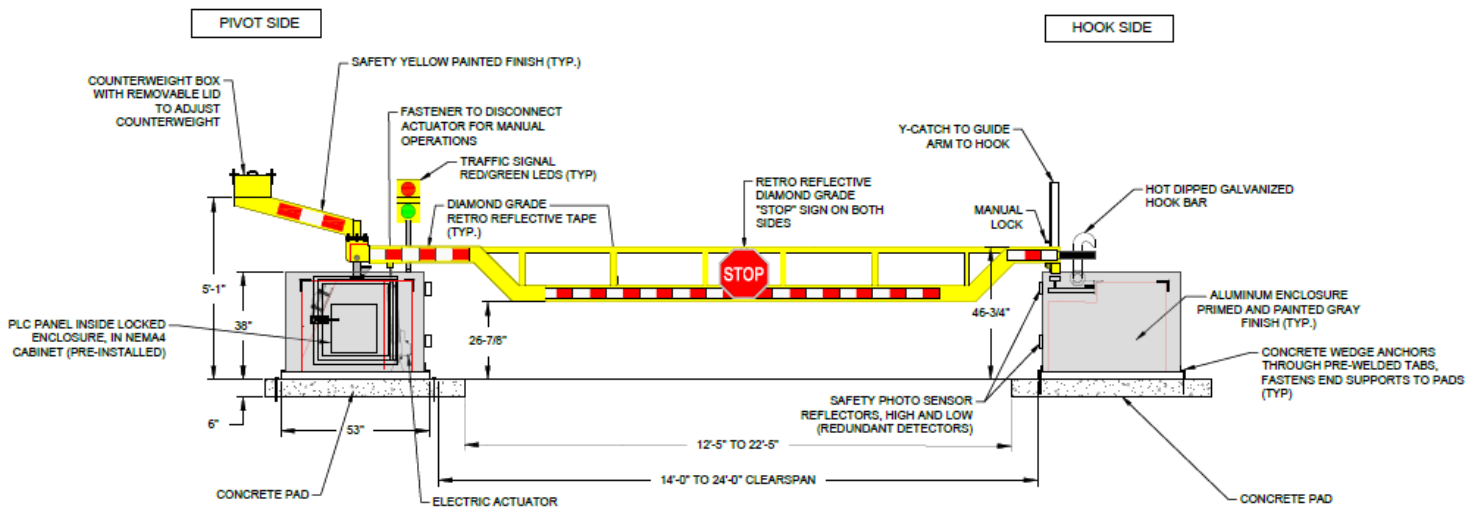
PRODUCT DETAILS

- Model #: DACB-ELE-1200
- Spans Available: 14'-24'
- Available in electric or manual versions



Scan for more information.

AVENGER M50 ELECTRIC SURFACE SET DROP ARM



NOTES
1. CUSTOM REINFORCED CONCRETE BLOCKS (END SUPPORTS) WEIGH ABOUT 6000 LBS EACH. END SUPPORTS ARE ANCHORED INTO CONCRETE PADS BELOW.

WHY BARRIER 1?

Core Competencies:

Barrier1 designs and manufactures crash-rated vehicle barriers that protect people, property, and critical infrastructure. Our solutions are engineered to stop vehicle-based threats while maintaining site functionality. Trusted across airports, military bases, stadiums, government buildings, data centers, and power plants, Barrier1 delivers proven perimeter protection.

What We Offer:

- Certified anti-ram barriers (ASTM F2656 & F3016)
- Shallow- and deep-mount options
- Temporary, removable, and permanent solutions
- Custom engineering and manufacturing
- Decorative covers and finishes for visual integration



MADE IN THE USA
Summerfield, NC