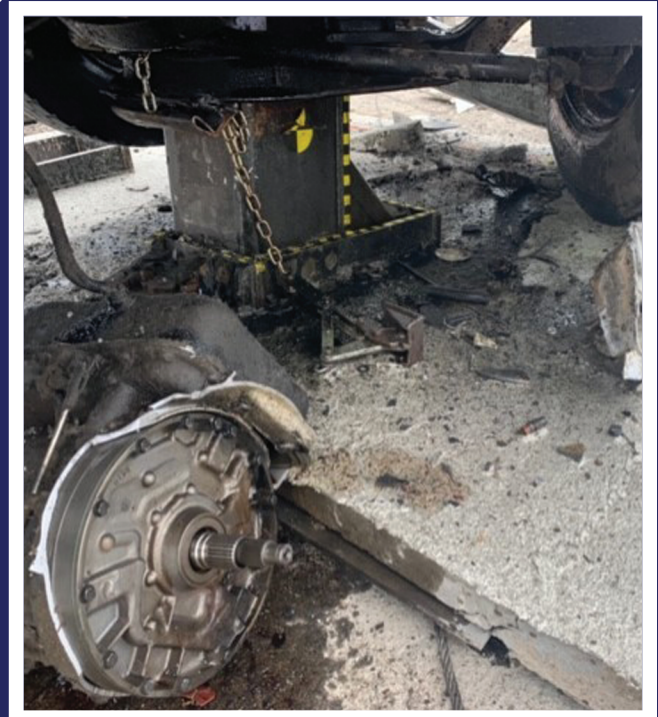




Talon

Super Shallow Foundation Bollard
Model: SSB-800

- Ideal for airport terminals, parking decks, subways, tunnels, city streets, or any location with shallow foundation. Requires only 4" excavation.
- No tying, bolting, welding, assembly or specialty subgrade required (allows for field adjustment)
- Easy to install with turns and across-grade elevation changes
- Variety of decorative covers available.
- Removable Bollard available.



Barrier1 Systems, LLC
336-617-8478 ● www.barrier1.com

ASTM F2656-15

M40 P1 Rated

**Stops 15,000 LBS.
vehicles at 40MPH**

PRODUCT DETAILS

Bollard: 12" x 12" Steel Tube

Weight: 1,600 lbs. Each (with rebar)

Foundation Depth: 4"

Industry-leading 4" foundation depth allows easy installation within existing city sidewalks.

A 3-bollard array installation is necessary to meet the crash-rating requirements.

