

B1 HERCULES M30

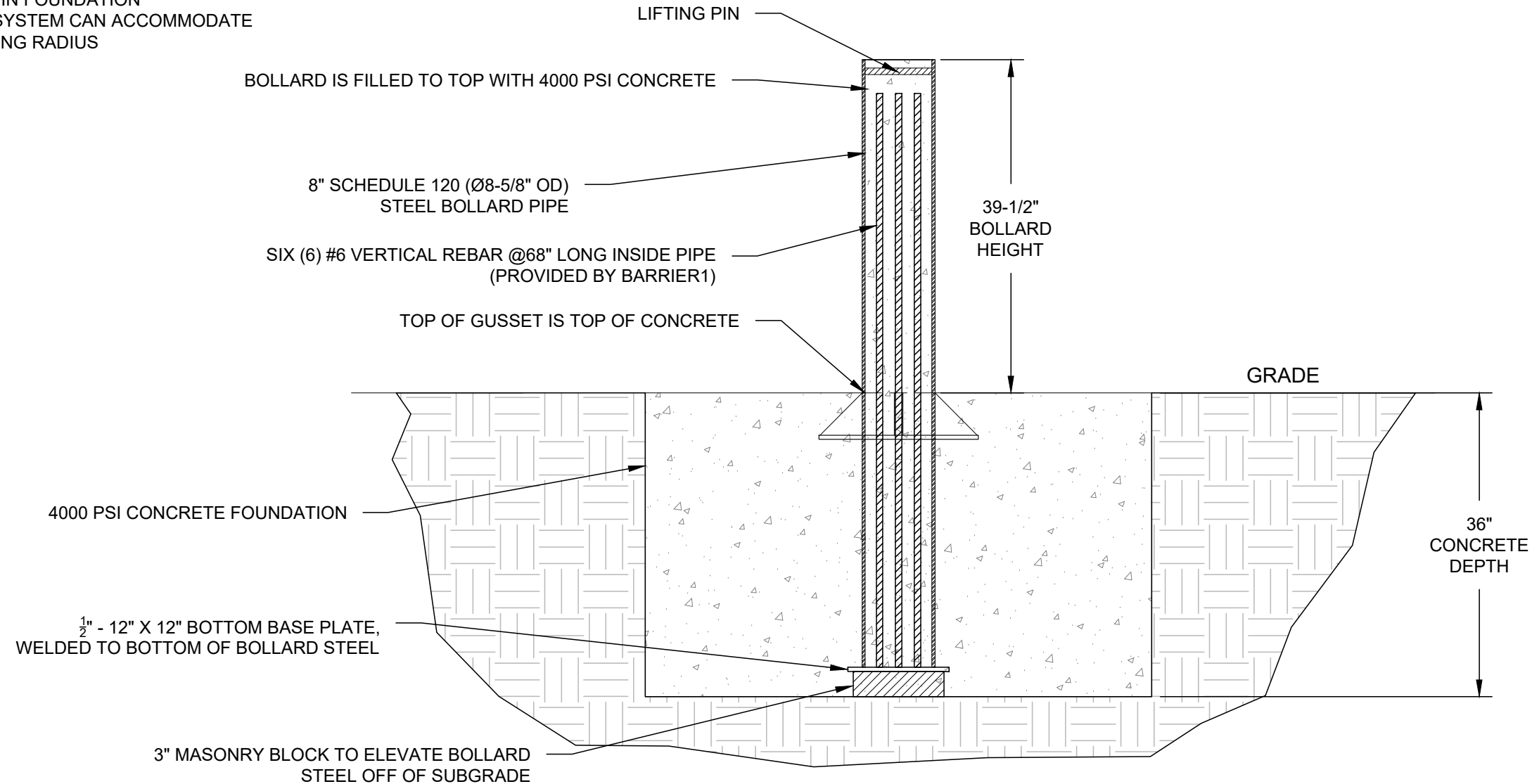
SET & POUR BOLLARD - MODEL SPB-400

CRASH TESTED TO ASTM F2656-07 - M30/P1 RATED - STOP 15,000 LB. VEHICLE AT 30 MPH IMPACT

TYPICAL SINGLE BOLLARD INSTALLATION

KEY FEATURES:

1. PREFABRICATED BOLLARD UNIT
2. NO REBAR IN FOUNDATION
3. BOLLARD SYSTEM CAN ACCOMMODATE ANY TURNING RADIUS



NOTE:

TOTAL QUANTITY OF BOLLARDS PROVIDED TO BE DEFINED ON PURCHASE ORDER.



BARRIER1 SYSTEMS, LLC

5335 US 220
SUMMERFIELD, NC 27358
(336) 617-8478 www.barrier1.com
sales@barrier1.com

PATENT PROTECTED

THE DRAWINGS AND INFORMATION CONTAINED HEREIN ARE PROPRIETARY AND CONFIDENTIAL, AND ARE AUTHORIZED ONLY FOR USE FOR WORK ASSOCIATED WITH BARRIER1 SYSTEMS, LLC ALL RIGHTS RESERVED.

ELEVATION VIEW
(STAND-ALONE)

PROJECT#:
24-03-09000-042-01
SPB-400
WEBSITE DRAWING

SHEET: 1 OF 6

20240314-10-W

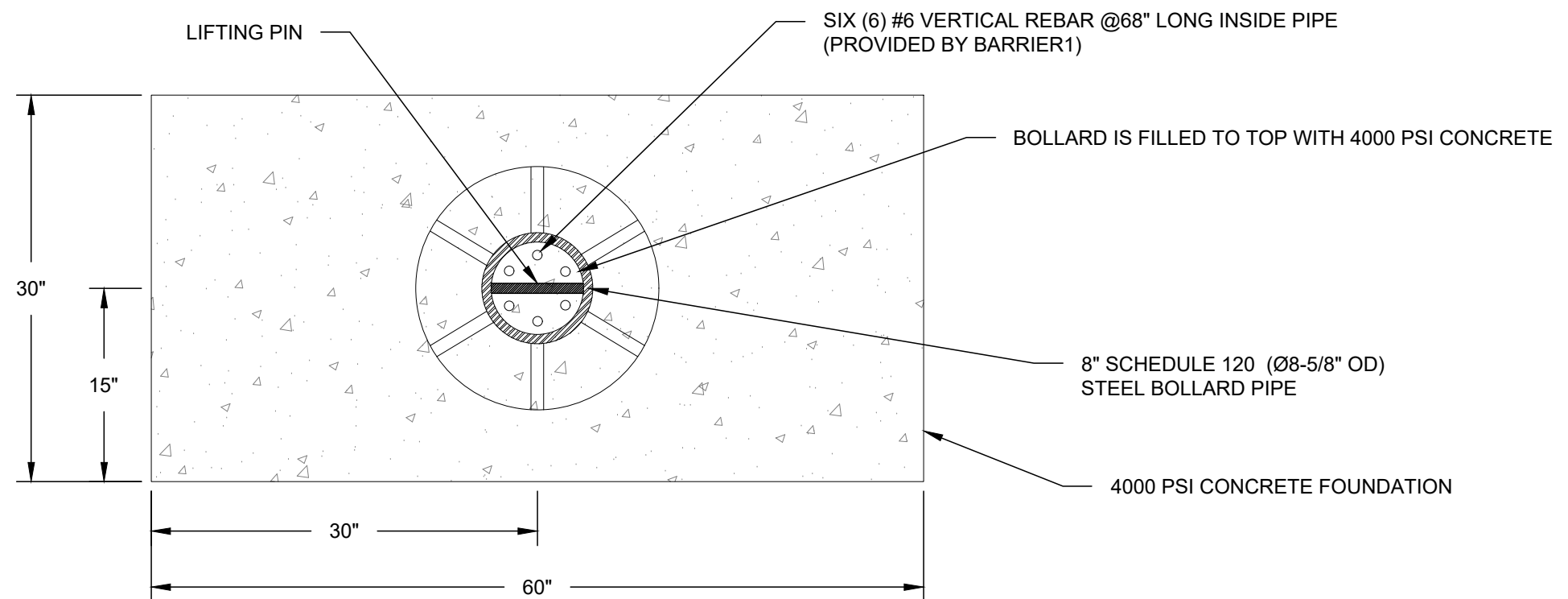
SCALE: N.T.S.

B1 HERCULES M30

SET & POUR BOLLARD - MODEL SPB-400

CRASH TESTED TO ASTM F2656-07 - M30/P1 RATED - STOP 15,000 LB. VEHICLE AT 30 MPH IMPACT

TYPICAL SINGLE BOLLARD INSTALLATION



BARRIER1 SYSTEMS, LLC

5335 US 220
SUMMERFIELD, NC 27358
(336) 617-8478 www.barrier1.com
sales@barrier1.com

PATENT PROTECTED

THE DRAWINGS AND INFORMATION CONTAINED HEREIN ARE PROPRIETARY AND CONFIDENTIAL, AND ARE AUTHORIZED ONLY FOR USE FOR WORK ASSOCIATED WITH BARRIER1 SYSTEMS, LLC ALL RIGHTS RESERVED.

PLAN VIEW
(STAND-ALONE)

PROJECT#:
24-03-09000-042-01
SPB-400
WEBSITE DRAWING

SHEET: 2 OF 6

20240314-10-W

SCALE: N.T.S.

B1 HERCULES M30

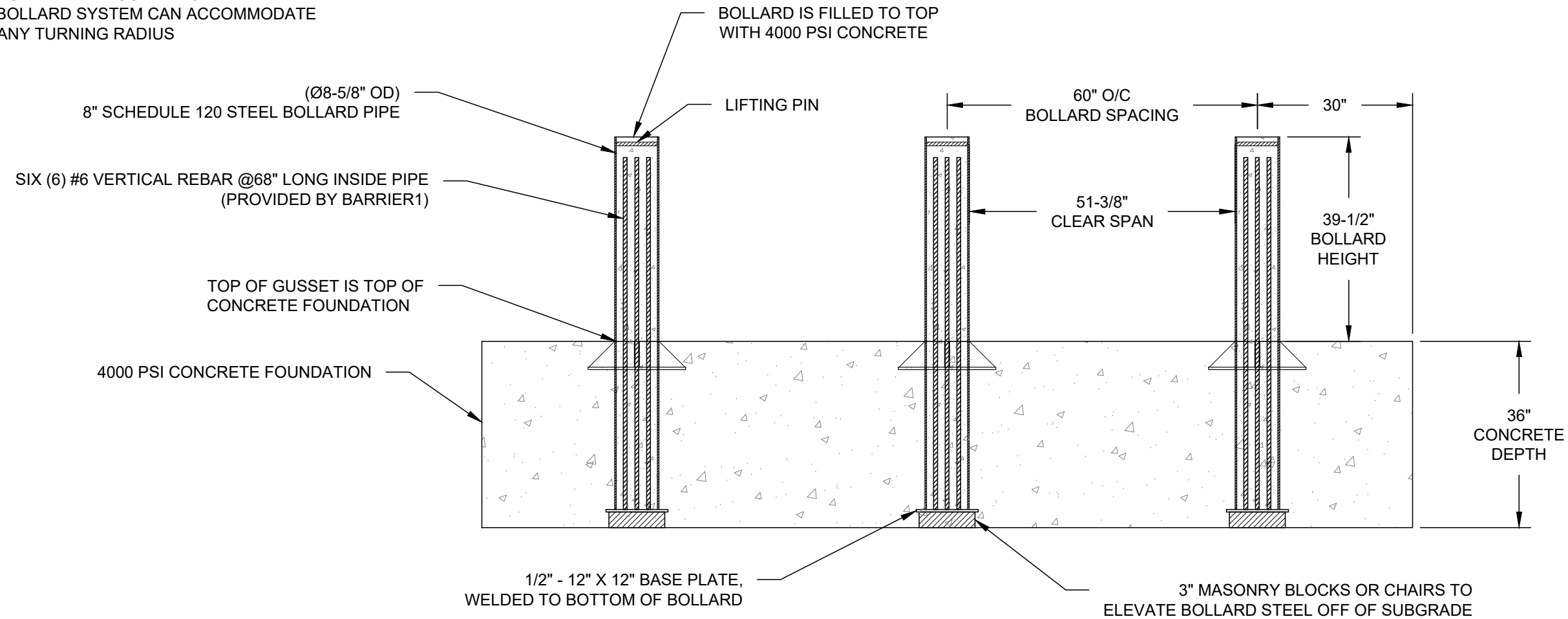
SET & POUR BOLLARD - MODEL SPB-400

CRASH TESTED TO ASTM F2656-07 - M30/P1 RATED - STOP 15,000 LB. VEHICLE AT 30 MPH IMPACT

TYPICAL BOLLARD ARRAY INSTALLATION

KEY FEATURES:

1. PREFABRICATED BOLLARD UNIT
2. NO REBAR IN FOUNDATION
3. BOLLARD SYSTEM CAN ACCOMMODATE ANY TURNING RADIUS



NOTE:

1. MODIFIED SPACING FOR SITE SPECIFIC CONDITIONS AVAILABLE.



BARRIER1 SYSTEMS, LLC

5335 US 220
 SUMMERFIELD, NC 27358
 (336) 617-8478 www.barrier1.com
 sales@barrier1.com

PATENT PROTECTED

THE DRAWINGS AND INFORMATION CONTAINED HEREIN ARE PROPRIETARY AND CONFIDENTIAL, AND ARE AUTHORIZED ONLY FOR USE FOR WORK ASSOCIATED WITH BARRIER1 SYSTEMS, LLC ALL RIGHTS RESERVED.

ELEVATION VIEW
 (ARRAY)

PROJECT#:
 24-03-09000-042-01
 SPB-400
 WEBSITE DRAWING

SHEET: 3 OF 6

20240314-10-W

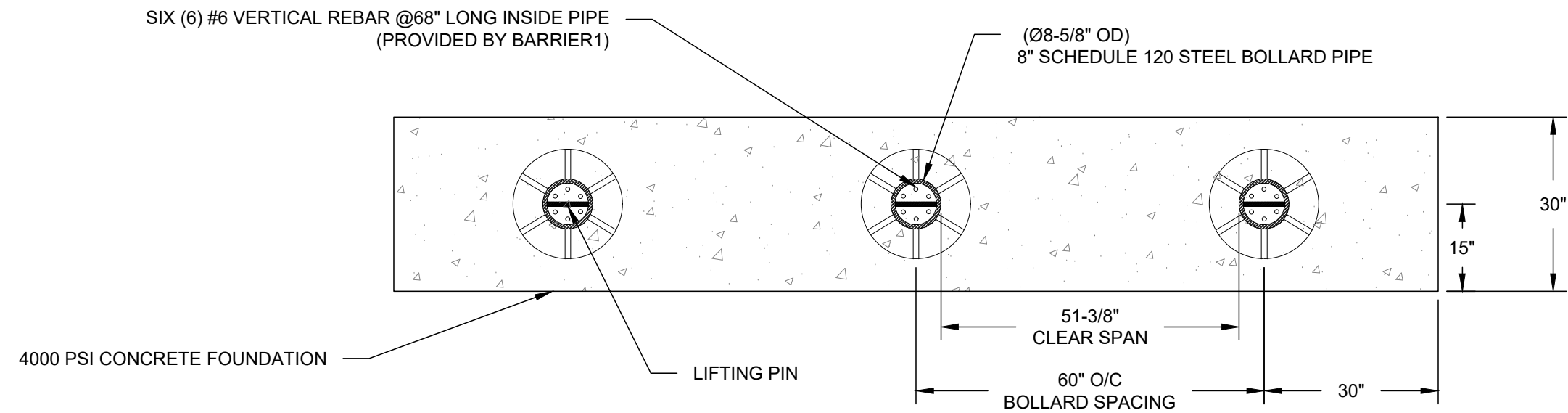
SCALE: N.T.S.

B1 HERCULES M30

SET & POUR BOLLARD - MODEL SPB-400

CRASH TESTED TO ASTM F2656-07 - M30/P1 RATED - STOP 15,000 LB. VEHICLE AT 30 MPH IMPACT

TYPICAL BOLLARD ARRAY INSTALLATION



NOTE:

- 1. MODIFIED SPACING FOR SITE SPECIFIC CONDITIONS AVAILABLE.



BARRIER1 SYSTEMS, LLC

5335 US 220
SUMMERFIELD, NC 27358
(336) 617-8478 www.barrier1.com
sales@barrier1.com

PATENT PROTECTED

THE DRAWINGS AND INFORMATION CONTAINED HEREIN ARE PROPRIETARY AND CONFIDENTIAL, AND ARE AUTHORIZED ONLY FOR USE FOR WORK ASSOCIATED WITH BARRIER1 SYSTEMS, LLC ALL RIGHTS RESERVED.

PLAN VIEW
(ARRAY)

PROJECT#:
24-03-09000-042-01
SPB-400
WEBSITE DRAWING

SHEET: 4 OF 6

20240314-10-W

SCALE: N.T.S.

B1 HERCULES M30

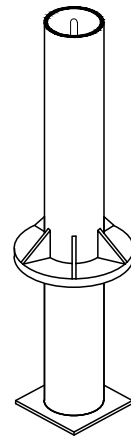
SET & POUR BOLLARD - MODEL SPB-400

CRASH TESTED TO ASTM F2656-07 - M30/P1 RATED - STOP 15,000 LB. VEHICLE AT 30 MPH IMPACT

MATERIALS PROVIDED

STANDARD FINISH:
GLOSS BLACK PAINT

PREFABRICATED BOLLARD MATERIALS PROVIDED BY BARRIER1 SYSTEMS



(QTY 1) EACH:
BOLLARD ASSEMBLY



(QTY 6) EACH:
PRE-CUT #6 VERTICAL REBAR
@ 68" LONG
(PLACED INSIDE BOLLARD)

MATERIALS PROVIDED BY INSTALLER

1. CONCRETE, ABOUT 1.5 CUBIC YARDS PER BOLLARD
2. MASONRY BLOCKS OR CHAIRS TO ELEVATE BOLLARDS OFF OF SUBGRADE



BARRIER1 SYSTEMS, LLC

5335 US 220
SUMMERFIELD, NC 27358
(336) 617-8478 www.barrier1.com
sales@barrier1.com

PATENT PROTECTED

THE DRAWINGS AND INFORMATION CONTAINED HEREIN ARE PROPRIETARY AND CONFIDENTIAL, AND ARE AUTHORIZED ONLY FOR USE FOR WORK ASSOCIATED WITH BARRIER1 SYSTEMS, LLC ALL RIGHTS RESERVED.

MATERIALS
PROVIDED

PROJECT#:
24-03-09000-042-01
SPB-400
WEBSITE DRAWING

SHEET: 5 OF 6

20240314-10-W

SCALE: N.T.S.

B1 HERCULES M30

SET & POUR BOLLARD - MODEL SPB-400

CRASH TESTED TO ASTM F2656-07 - M30/P1 RATED - STOP 15,000 LB. VEHICLE AT 30 MPH IMPACT

INSTALLATION STEPS

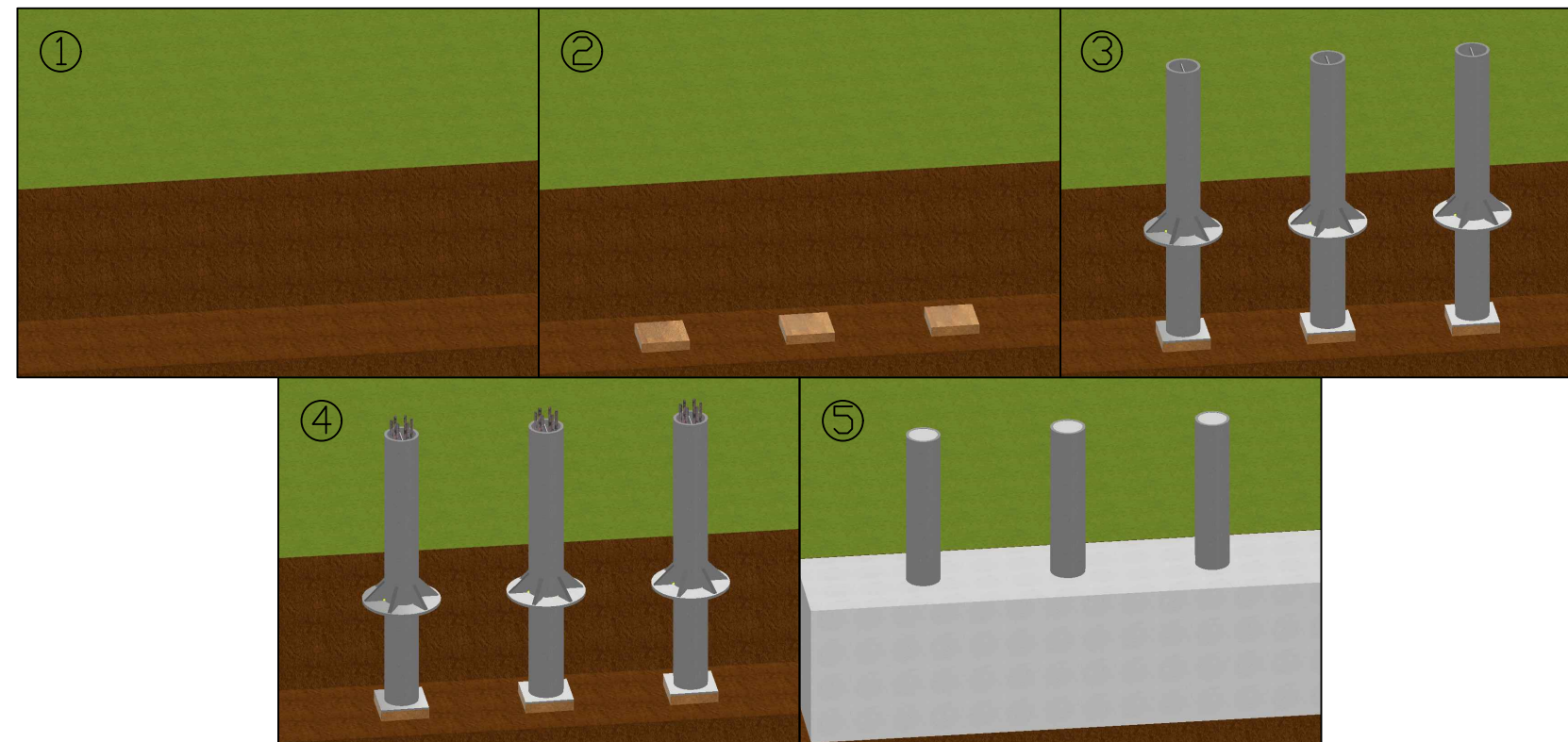
① EXCAVATE THEN TAMP SUBGRADE WITH PLATE TAMPER.

② USE MASONRY BLOCK OR CHAIRS TO ELEVATE BOLLARD OFF SUBGRADE, SO THAT TOP OF GUSSET / SLEEVE IS SAME HEIGHT AS TOP OF CONCRETE.

③ PLACE PREFABRICATED BOLLARDS INTO EXCAVATION.

④ INSERT VERTICAL REBAR INTO BOLLARD TUBE.

⑤ FILL BOLLARD TUBE AND EXCAVATION WITH CONCRETE.



BARRIER1 SYSTEMS, LLC

5335 US 220
SUMMERFIELD, NC 27358
(336) 617-8478 www.barrier1.com
sales@barrier1.com

PATENT PROTECTED

THE DRAWINGS AND INFORMATION CONTAINED HEREIN ARE PROPRIETARY AND CONFIDENTIAL, AND ARE AUTHORIZED ONLY FOR USE FOR WORK ASSOCIATED WITH BARRIER1 SYSTEMS, LLC ALL RIGHTS RESERVED.

INSTALLATION STEPS

PROJECT#:
24-03-09000-042-01
SPB-400
WEBSITE DRAWING

SHEET: 6 OF 6

20240314-10-W

SCALE: N.T.S.