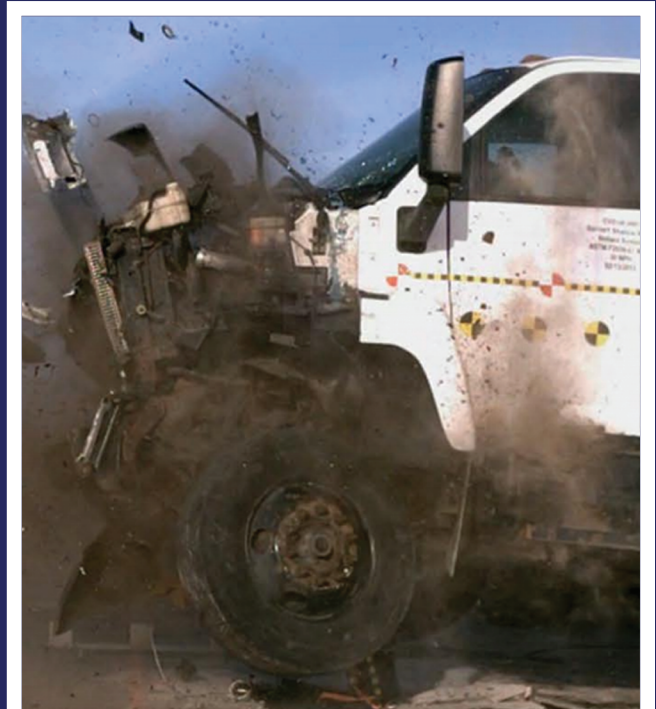




Tomahawk

Shallow Mount Stand Alone Bollards
Model: SMB-400 SA / SMB-1200 SA

- Ideal for locations that require high-security bollards but have limited foundation depth to work with.
- Industry leading high-security single shallow mount bollard.
- 10" and 14" foundations allow for installation where underground utilities would prevent deep-mounted bollards
- Variety of decorative covers available.
- Removable Bollard available as an option.



Barrier1 Systems, LLC
336-617-8478 • www.barrier1.com

ASTM F2656-07
ASTM F2656-15

M30 P1 Rated
M50 P1 Rated

Stops 15,000 LBS.
vehicles @ 30 & 50 MPH

PRODUCT DETAILS

M30 Diameter: 8 5/8" OD Steel Pipe

M50 Diameter: 10 3/4" OD Steel Pipe

M30 Weight: 1,450 lbs. Each (with rebar)

M50 Weight: 1,965 lbs. Each (with rebar)

Foundation Depth: M30 - 10"; M40 - 14"

Bollard Cover Diameter: M30 - 10";

M50 - 12"

