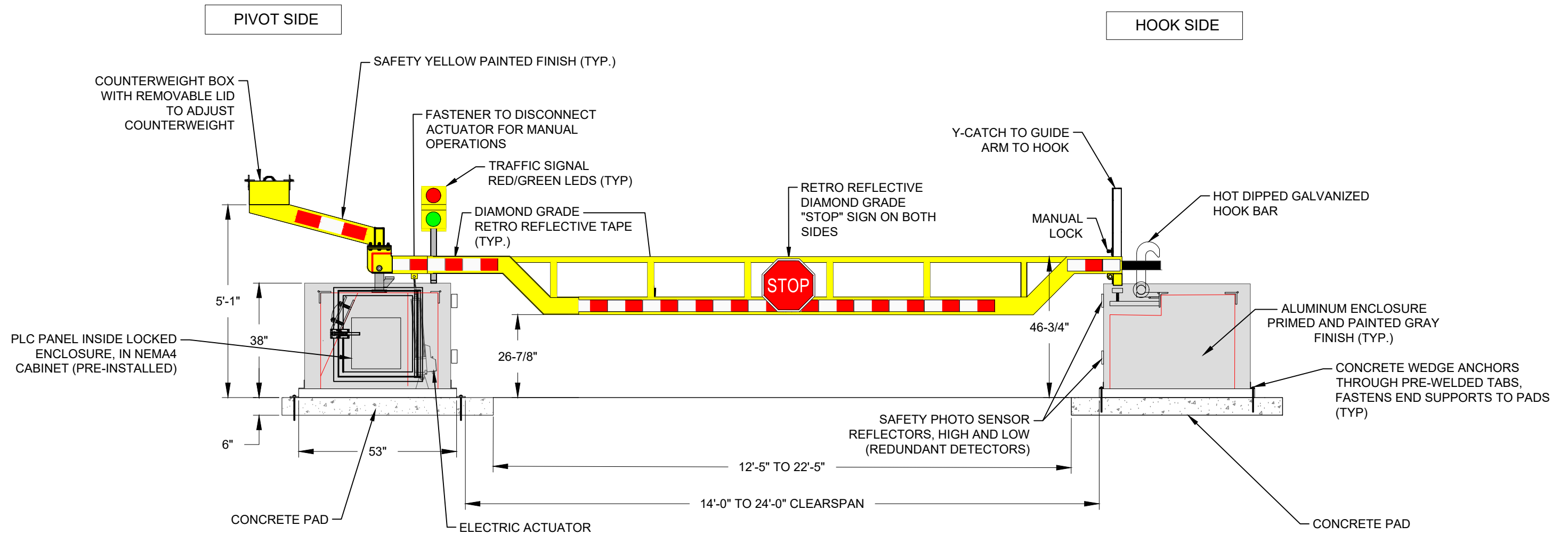


B1 AVENGER M50 - ELECTRIC

ELECTRIC DROP ARM CRASH BEAM- MODEL DACB-ELE-1200

CRASH TESTED TO ASTM F2656-07 - M50/P3 RATED - STOPS 15,000 LB. VEHICLE AT 50 MPH IMPACT



NOTES
 1. CUSTOM REINFORCED CONCRETE BLOCKS (END SUPPORTS) WEIGH ABOUT 6000 LBS EACH. END SUPPORTS ARE ANCHORED INTO CONCRETE PADS BELOW.



BARRIER1 SYSTEMS, LLC
 8015 THORNDIKE ROAD
 GREENSBORO, NC 27409
 (336) 617-8478 www.barrier1.com
 sales@barrier1.com

PATENT PROTECTED

THE DRAWINGS AND INFORMATION CONTAINED HEREIN ARE PROPRIETARY AND CONFIDENTIAL, AND ARE AUTHORIZED ONLY FOR USE FOR WORK ASSOCIATED WITH BARRIER1 SYSTEMS, LLC ALL RIGHTS RESERVED.

ELEVATION VIEW AND DETAIL
 LOWERED POSITION
 (1 OF 3)

ELECTRIC DROP ARM

SHEET: 1 OF 7

20230106-10-W

SCALE: N.T.S.

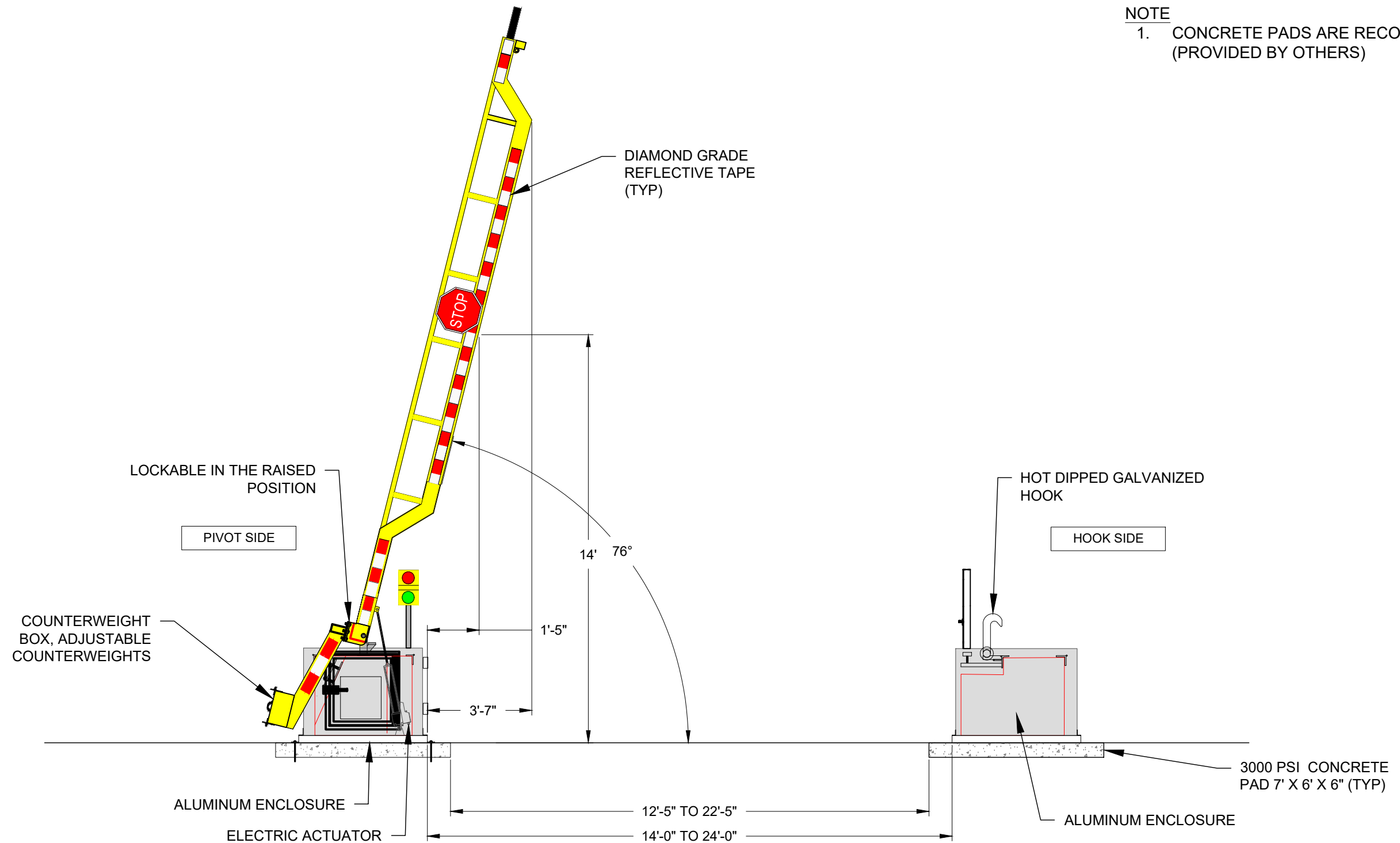
B1 AVENGER M50 - ELECTRIC

ELECTRIC DROP ARM CRASH BEAM- MODEL DACB-ELE-1200

CRASH TESTED TO ASTM F2656-07 - M50/P3 RATED - STOPS 15,000 LB. VEHICLE AT 50 MPH IMPACT

NOTE

1. CONCRETE PADS ARE RECOMMENDED (PROVIDED BY OTHERS)



BARRIER1 SYSTEMS, LLC

8015 THORNDIKE ROAD
GREENSBORO, NC 27409
(336) 617-8478 www.barrier1.com
sales@barrier1.com

PATENT PROTECTED

THE DRAWINGS AND INFORMATION CONTAINED HEREIN ARE PROPRIETARY AND CONFIDENTIAL, AND ARE AUTHORIZED ONLY FOR USE FOR WORK ASSOCIATED WITH BARRIER1 SYSTEMS, LLC ALL RIGHTS RESERVED.

ELEVATION VIEW AND DETAIL
RAISED POSITION
(2 OF 3)

ELECTRIC DROP ARM

SHEET: 2 OF 7

20230106-10-W

SCALE: N.T.S.

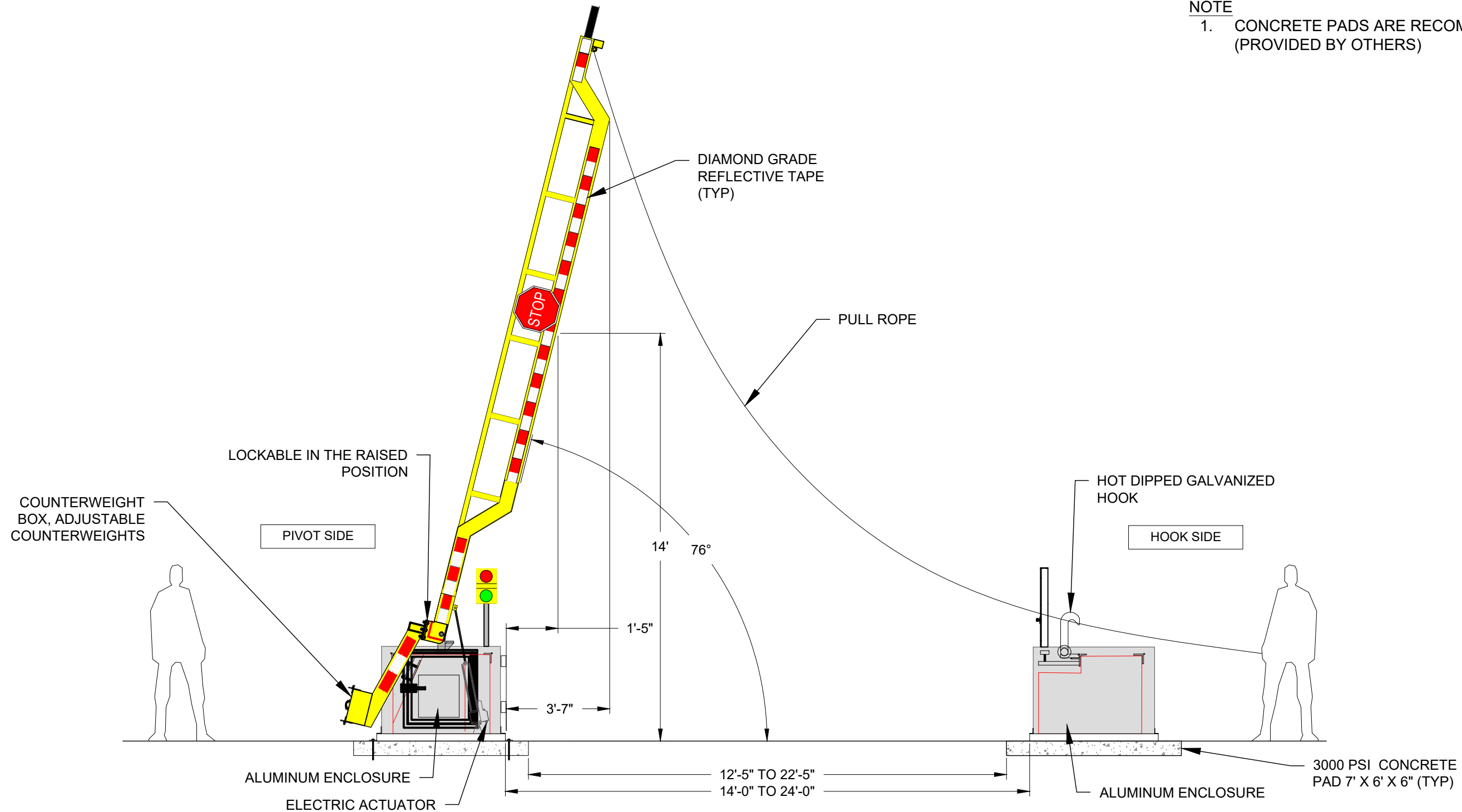
B1 AVENGER M50 - ELECTRIC

ELECTRIC DROP ARM CRASH BEAM- MODEL DACB-ELE-1200

CRASH TESTED TO ASTM F2656-07 - M50/P3 RATED - STOPS 15,000 LB. VEHICLE AT 50 MPH IMPACT

NOTE

1. CONCRETE PADS ARE RECOMMENDED (PROVIDED BY OTHERS)



BARRIER1 SYSTEMS, LLC

8015 THORNDIKE ROAD
GREENSBORO, NC 27409
(336) 617-8478 www.barrier1.com
sales@barrier1.com

PATENT PROTECTED

THE DRAWINGS AND INFORMATION CONTAINED HEREIN ARE PROPRIETARY AND CONFIDENTIAL, AND ARE AUTHORIZED ONLY FOR USE FOR WORK ASSOCIATED WITH BARRIER1 SYSTEMS, LLC ALL RIGHTS RESERVED.

ELEVATION VIEW AND DETAIL
MANUALLY RAISED
(3 OF 3)

ELECTRIC DROP ARM

SHEET: 3 OF 7

20230106-10-W

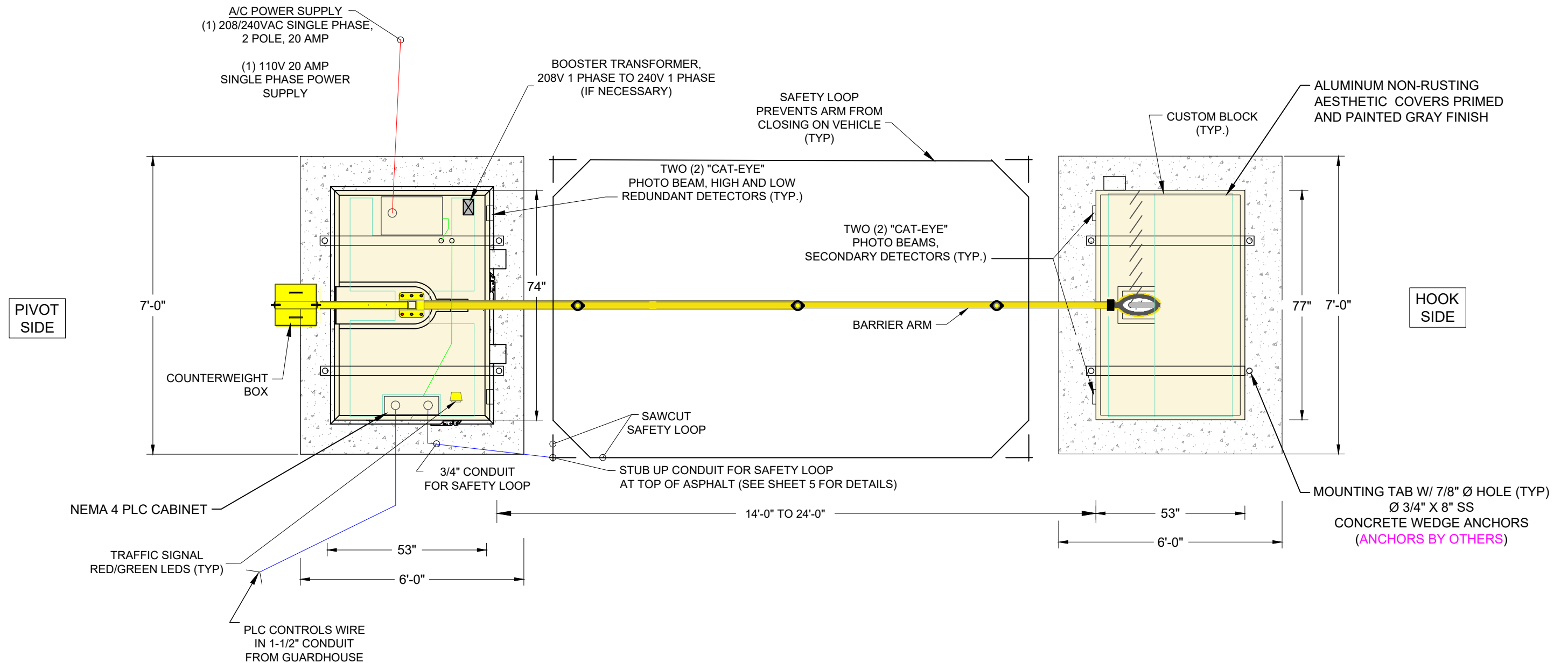
SCALE: N.T.S.

B1 AVENGER M50 - ELECTRIC

ELECTRIC DROP ARM CRASH BEAM- MODEL DACB-ELE-1200

CRASH TESTED TO ASTM F2656-07 - M50/P3 RATED - STOPS 15,000 LB. VEHICLE AT 50 MPH IMPACT

TOP VIEW



BARRIER1 SYSTEMS, LLC

8015 THORNDIKE ROAD
GREENSBORO, NC 27409
(336) 617-8478 www.barrier1.com
sales@barrier1.com

PATENT PROTECTED

THE DRAWINGS AND INFORMATION CONTAINED HEREIN ARE PROPRIETARY AND CONFIDENTIAL, AND ARE AUTHORIZED ONLY FOR USE FOR WORK ASSOCIATED WITH BARRIER1 SYSTEMS, LLC ALL RIGHTS RESERVED.

PLAN VIEW AND ELECTRICAL COMPONENTS

ELECTRIC DROP ARM

SHEET: 4 OF 7

20230106-10-W

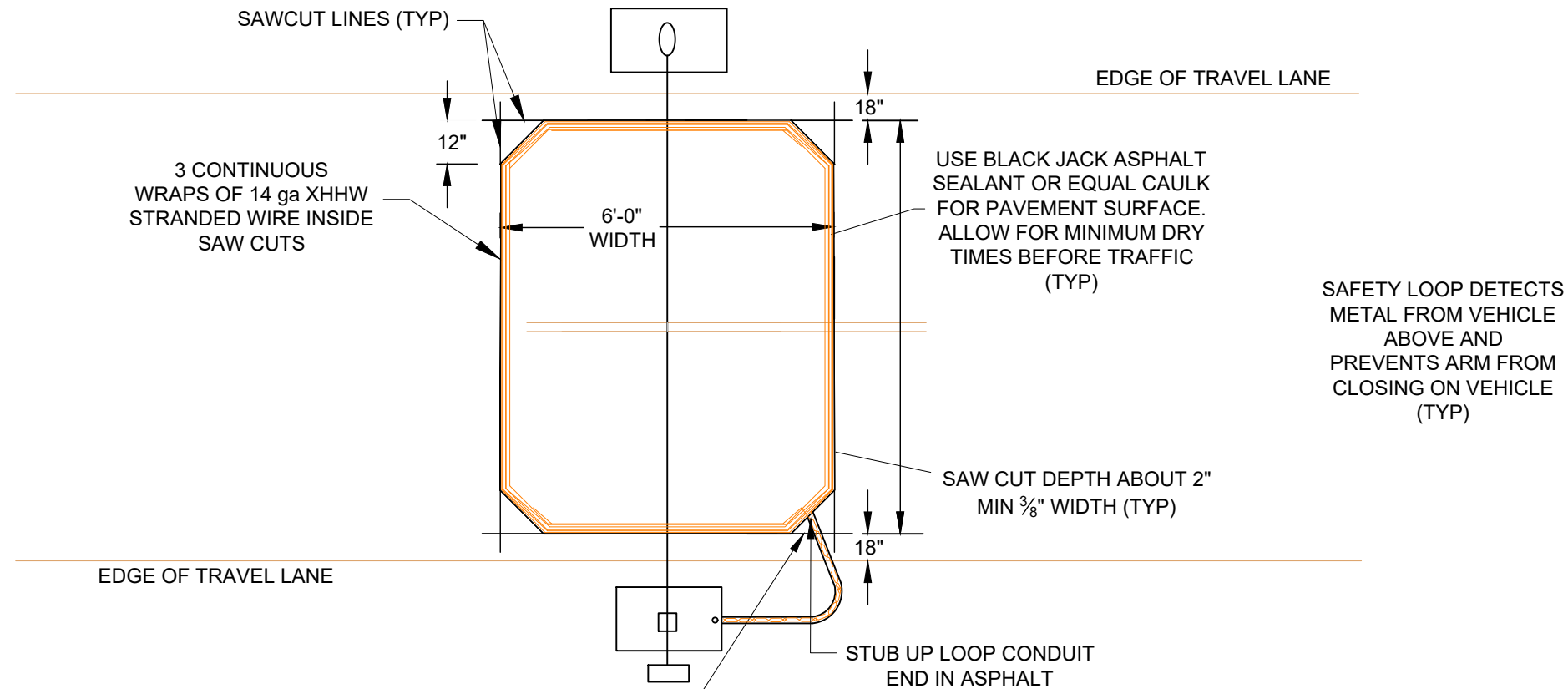
SCALE: N.T.S.

B1 AVENGER M50 - ELECTRIC

ELECTRIC DROP ARM CRASH BEAM- MODEL DACB-ELE-1200

CRASH TESTED TO ASTM F2656-07 - M50/P3 RATED - STOPS 15,000 LB. VEHICLE AT 50 MPH IMPACT

TYPICAL SAFETY LOOP INSTALLATION



TWIST TOGETHER THE 2X 14 ga WIRES WITH AT LEAST 6 TWISTS PER FOOT. ROUTE TWISTED WIRES THROUGH CONDUIT TO PLC CABINET
(INSTALLATION BY OTHERS)

NOTES - SAFTEY LOOPS

1. SAWCUT TO DEPTH OF ABOUT 2", ABOUT 3/8" WIDE BLADE
2. INSTALL LOOP WIRE (14 GAUGE XHHW)
3. CAULK ALL SAWCUT JOINTS
4. SAFETY LOOP DIMENSIONS AND SPACING CAN BE ADJUSTED IN FIELD. DIMENSION RECOMMENDATIONS ARE:
A. 18" MAXIMUM DISTANCE OFF EDGE OF TRAVEL LANE.
B. LENGTH OF LOOP IS FIELD ADJUSTED.



BARRIER1 SYSTEMS, LLC

8015 THORNDIKE ROAD
GREENSBORO, NC 27409
(336) 617-8478 www.barrier1.com
sales@barrier1.com

PATENT PROTECTED

THE DRAWINGS AND INFORMATION CONTAINED HEREIN ARE PROPRIETARY AND CONFIDENTIAL, AND ARE AUTHORIZED ONLY FOR USE FOR WORK ASSOCIATED WITH BARRIER1 SYSTEMS, LLC ALL RIGHTS RESERVED.

SAFETY LOOP DETAIL

ELECTRIC DROP ARM

SHEET: 5 OF 7

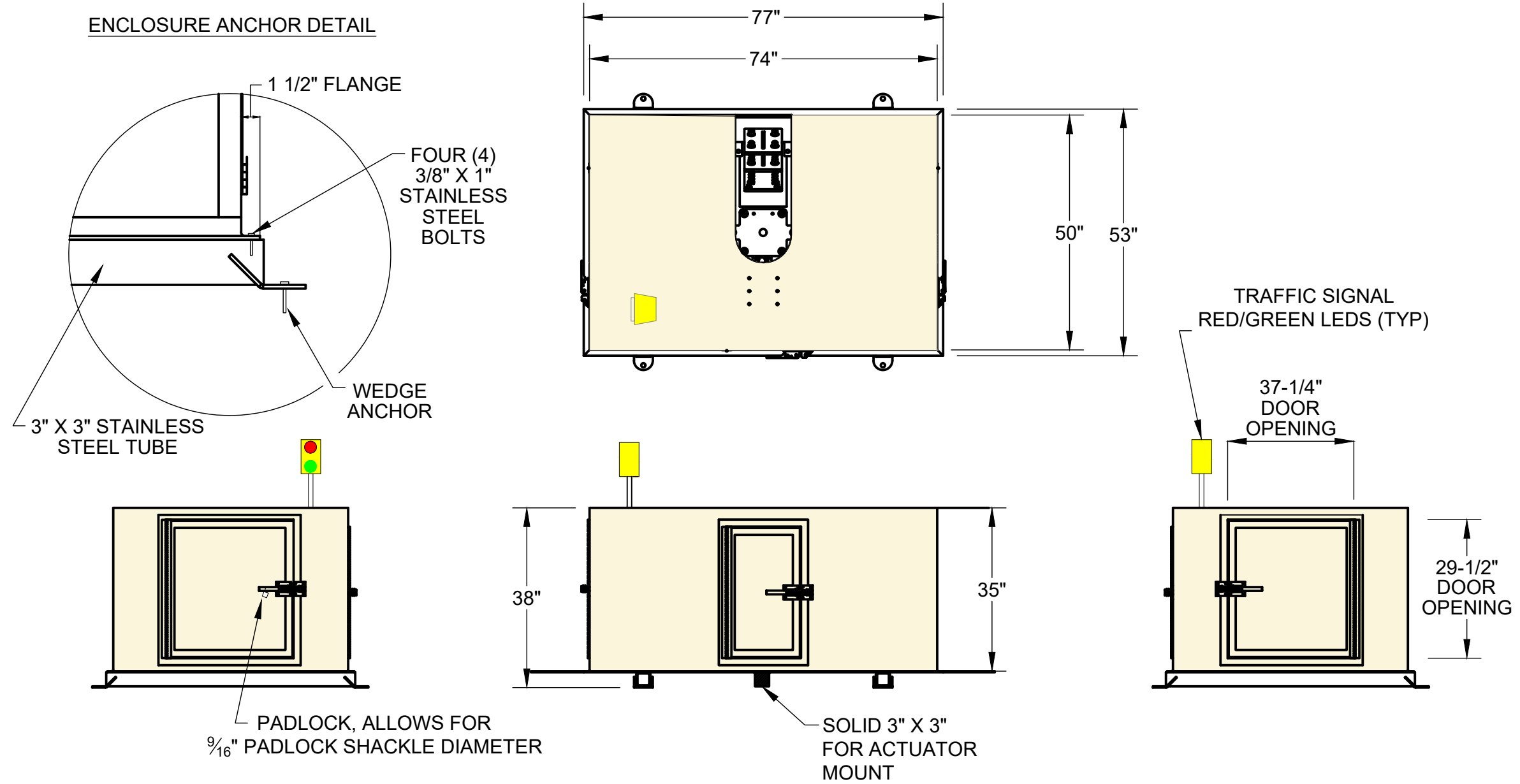
20230106-10-W

SCALE: N.T.S.

B1 AVENGER M50 - ELECTRIC

ELECTRIC DROP ARM CRASH BEAM- MODEL DACB-ELE-1200

CRASH TESTED TO ASTM F2656-07 - M50/P3 RATED - STOPS 15,000 LB. VEHICLE AT 50 MPH IMPACT



BARRIER1 SYSTEMS, LLC

8015 THORNDIKE ROAD
GREENSBORO, NC 27409
(336) 617-8478 www.barrier1.com
sales@barrier1.com

PATENT PROTECTED

THE DRAWINGS AND INFORMATION CONTAINED HEREIN ARE PROPRIETARY AND CONFIDENTIAL, AND ARE AUTHORIZED ONLY FOR USE FOR WORK ASSOCIATED WITH BARRIER1 SYSTEMS, LLC ALL RIGHTS RESERVED.

ENCLOSURE DETAIL
(1 OF 2) -
PIVOT SIDE

ELECTRIC DROP ARM

SHEET: 6 OF 7

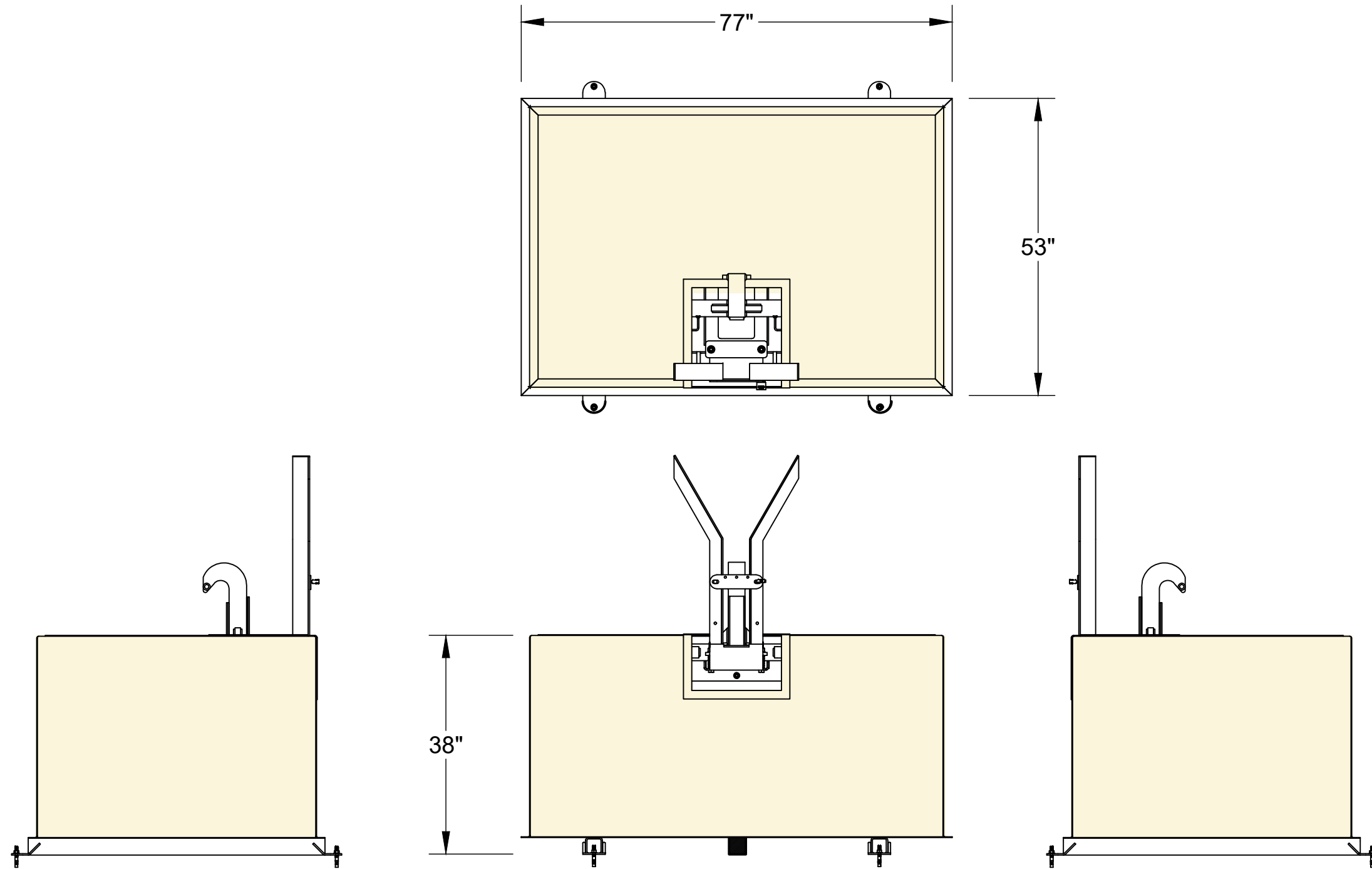
20230106-10-W

SCALE: N.T.S.

B1 AVENGER M50 - ELECTRIC

ELECTRIC DROP ARM CRASH BEAM- MODEL DACB-ELE-1200

CRASH TESTED TO ASTM F2656-07 - M50/P3 RATED - STOPS 15,000 LB. VEHICLE AT 50 MPH IMPACT



BARRIER1 SYSTEMS, LLC

8015 THORNDIKE ROAD
GREENSBORO, NC 27409
(336) 617-8478 www.barrier1.com
sales@barrier1.com

PATENT PROTECTED

THE DRAWINGS AND INFORMATION CONTAINED HEREIN ARE PROPRIETARY AND CONFIDENTIAL, AND ARE AUTHORIZED ONLY FOR USE FOR WORK ASSOCIATED WITH BARRIER1 SYSTEMS, LLC ALL RIGHTS RESERVED.

ENCLOSURE DETAIL
(2 OF 2) -
HOOK SIDE

ELECTRIC DROP ARM

SHEET: 7 OF 7

20230106-10-W

SCALE: N.T.S.